

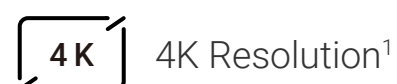


# H80x Dual

## Pan & Tilt Wi-Fi Camera

### Colorful. Powerful. Watchful.

Meet the state-of-the-art outdoor camera that smartly mixes the power of two lenses to truly understand the lights and shadows of an environment and capture crucial moments. Featuring EZVIZ's self-developed ColorFULL technology and ultra-clear 4K resolution, the H80x Dual doesn't need to turn on any spotlight before restoring lifelike details in a dark space. A flexible pan and tilt camera by design, it tracks activities, patrols key areas and triggers on-the-spot warnings all automatically to amp up a peaceful mind.



4K Resolution<sup>1</sup>



Intelligent  
Dual Lenses



ColorFULL Night Vision  
under Ultra-Low Light



F1.0 Large  
Aperture



360° Panoramic  
View



AI-Powered  
Human / Vehicle  
Shape Detection



Auto-Zoom  
Tracking



Two Patrol Modes  
for Auto-Security



One-Click  
Return to Pre-Set  
Directions



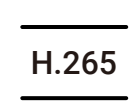
Active Defense with  
Siren & Strobe Light



Two-Way Talk



Weatherproof  
Design



H.265 Video  
Compression



Smart Integration  
with Google Assistant  
& Amazon Alexa<sup>2</sup>



Supports MicroSD Card  
(Up to 512 GB) & EZVIZ  
CloudPlay Storage<sup>3</sup>





## Panoramic view with next-level 4K vision

The H80x Dual is determined to upgrade the level of protection of your outdoor space. With its lifelike 4K resolution, it ensures that even the smallest detail is captured — you can easily see the face of your happy dog even at a distance. Complementing its pan-and-tilt function, the camera offers 360-degree all-round protection for long-lasting peace of mind.





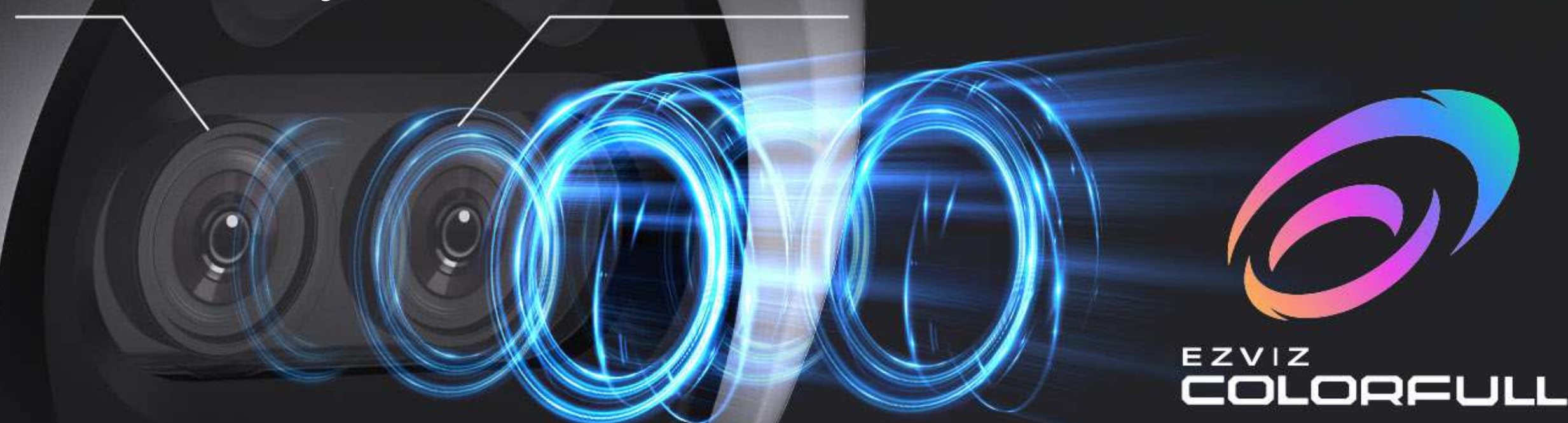
# ColorFULL Night Vision: Always stay true to colors

Full-color vision is now made through the night, with EZVIZ's innovative ColorFULL technology. Even when all the lights go out, every colorful detail can still get captured and presented in a natural way.

## Dual-Lens Image Processing

**4K Ultra Clarity**

**F1.0 Super Aperture**



## AI-ISP Technology

**-70%**

motion blur for even fast-moving objects

**+300%**

image signal-to-noise ratio for true colors & details



# ColorFULL means colorful details, fully presented

The camera faithfully captures reality in even ultra-low-light conditions – it recreates the colors with the correct light and shadow ratios throughout the entire scene, without uneven brightness or dark corners. It helps you capture finer detail, stay aware of a lurking situation and reduce the nuisance of flashes.

**Down to  
0.01 Lux**



Less Energy Cost with  
Little Illumination Needed



No Light Pollution Caused  
by Dazzling Spotlights



Less False Alarms Triggered  
by Insects Drawn to Light



Clearer License Plates  
with Less Light Reflected



**EZVIZ ColorFULL Night Vision**



Color Night Vision with Spotlights





Black-and-White Night Vision



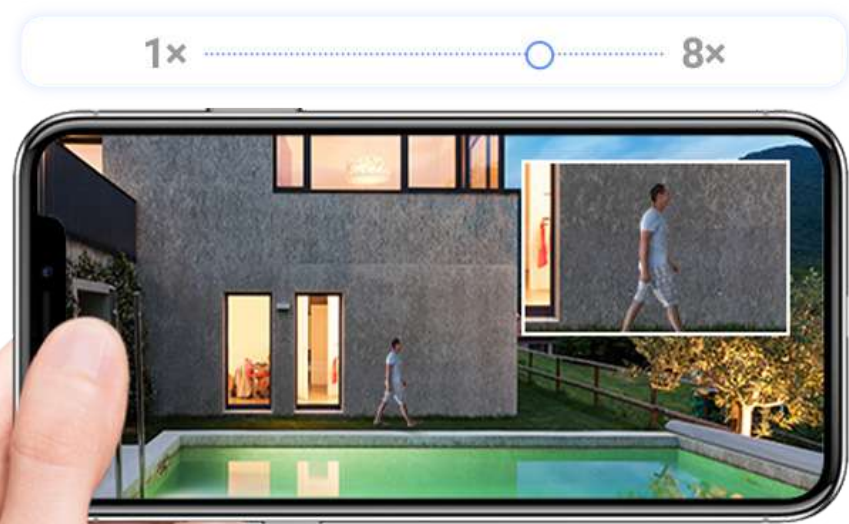
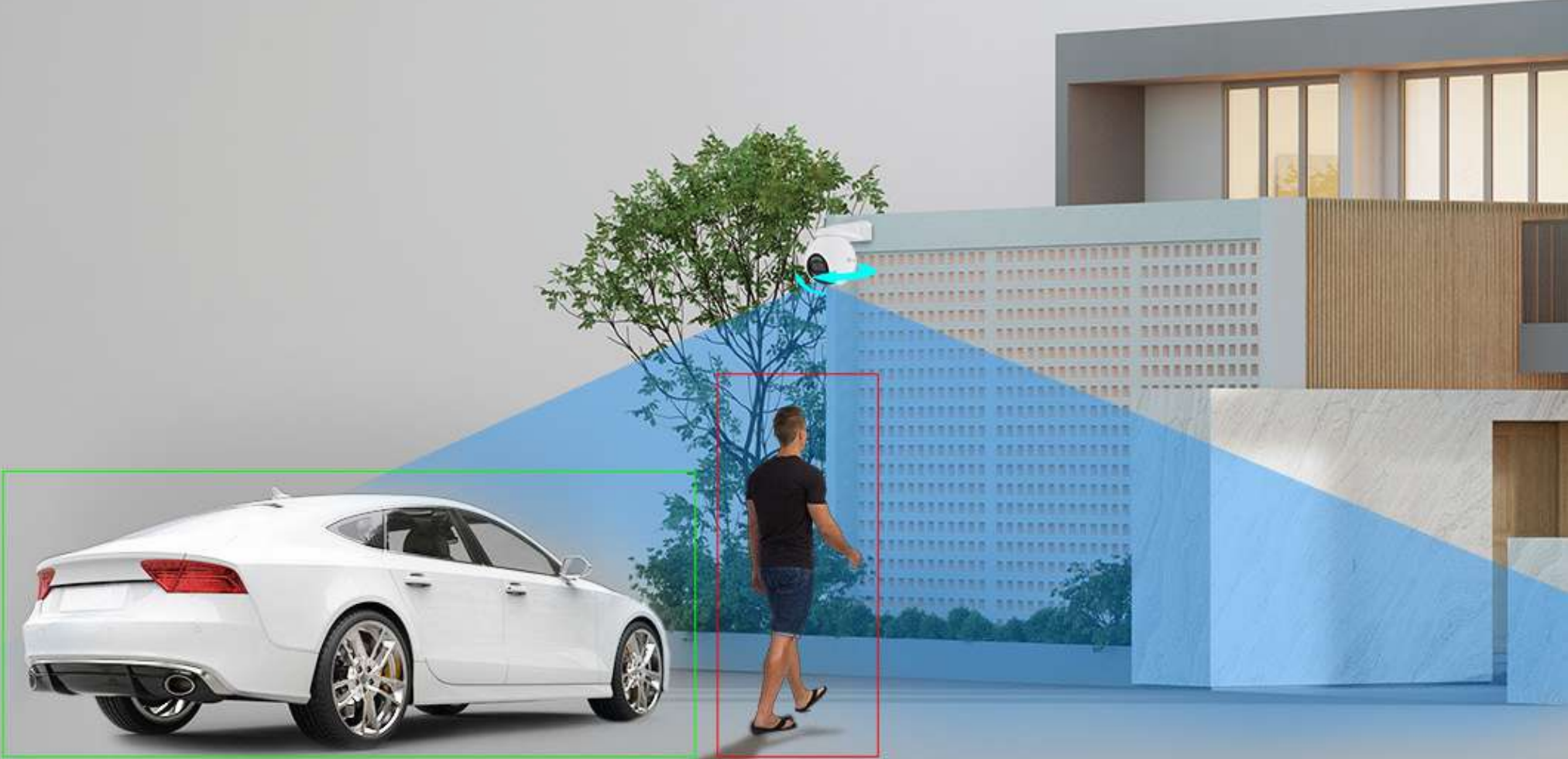
# Detect smartly for events that you care

No need to constantly check your door or rush to the backyard when you hear absurd noises. The H80x Dual helps you be aware of every person or vehicle visit. It notifies about people and vehicles in motion, and reduces unnecessary alerts triggered by objects in your surroundings.

 AI-Powered Human / Vehicle Shape Detection

 Customizable Detection Zone

**FREE** No Subscription Fee



# Track and focus with a zoom, all automatically

With its smart tracking ability, the H80x Dual ensures that no event easily disappears from a static camera view. Once identifying human actions, it automatically rotates and zooms in to capture the unfolding activity with a complete video recording.



## Patrol automatically for areas that matter

The H80x Dual monitors your property vigilantly with its unique patrol mode. It pans and tilts precisely to your pre-set viewpoints, automating the whole security check routines for greater peace of mind.



Patrol horizontally



Follow pre-set 4 points





## Adjustable sound and light alarm

The camera offers an additional level of security with its active defense function. When it notices intruders, it triggers a powerful siren and flashes at them with two spotlights<sup>4</sup> to warn them on the spot. What's more, users can flexibly adjust the sound and light alarm settings to suit their preferences.



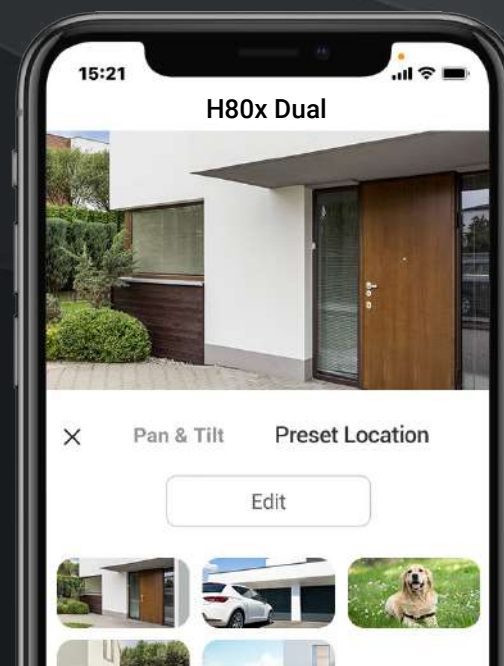
Garage



Front Yard



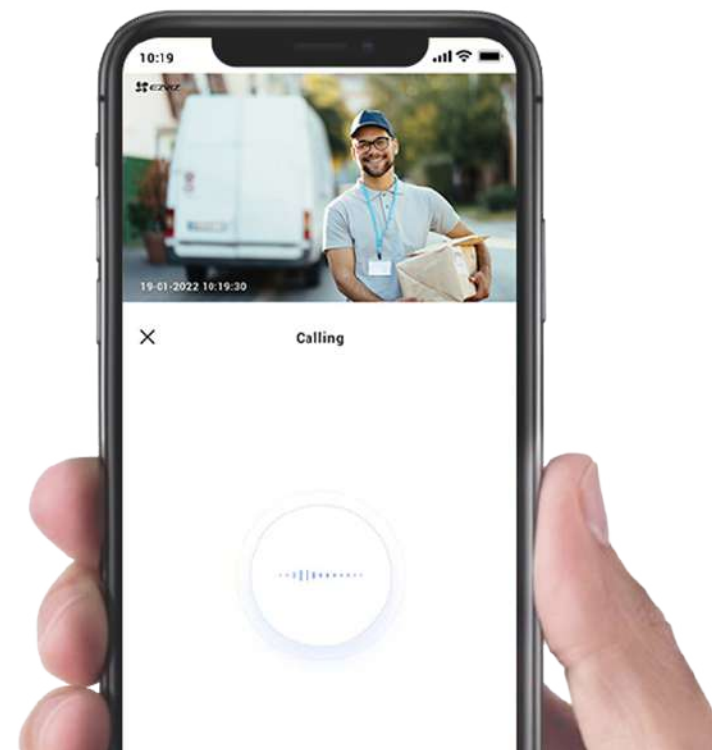
Front Door



## One click return to the preset location

You can use the EZVIZ App to set up 12 most frequently used vision spots, so that the H80x Dual adeptly navigates back to your preferred viewing angle with just one click.





## Greeting can be this easy

Enjoy two-way communications by simply using your phone. Or, pre-record specific voice messages that automatically play when people are detected on camera.

## More convenience for various needs



### Durable design for outdoor

To better protect your property, the camera is weatherproof to deliver long-standing performance, even in tough weather conditions.



### Dual storage options for important moments

The camera automatically saves detection-triggered history videos. You can choose to secure them on a large local storage card, or simply by subscribing to the EZVIZ CloudPlay.<sup>3</sup>



### Smart integration for hands-free control

The camera supports easy integration to your existing voice assistants. You can pull up the video feed by simply saying "Alexa" or "Hey Google".<sup>2</sup>



### H.265 for enhanced video experience

The H.265 creates a smoother viewing experience while only using about 50% of the data storage space required by cameras with H.264.<sup>5</sup>



# We're committed to protecting with trust

We put security as the primary goal of every product and system that we build, and assiduously improve our practices to better protect your device, data and privacy.

[Learn more about our security practices >](#)



**End-to-end  
Data Encryption**

**TLS**  
Data Transmission  
Encryption

**AES**  
Data Encryption

Our global certifications in the fields of **information security, privacy information security, and cloud security**



- 1 The H80x Dual is equipped with two lenses – one in 4K resolution and one in 1080p resolution that work together to provide a unified ultra-clear visual experience and fulfill the ColorFULL night vision under ultra-low light conditions.
- 2 Amazon Alexa and Google Assistant are not available in certain languages and countries.
- 3 Local storage cards must be purchased separately. Cloud storage service is only available in certain markets. Please verify availability before making a purchase.
- 4 The spotlight will not flash when color night vision mode is enabled.
- 5 Data from EZVIZ Lab’s test results under standard conditions. The video compression efficiency will vary with the frequency and complexity of the activity captured, and other environmental factors.



# Specifications

CS-H80x-R100-8G82WKFL

## Camera

|                       |   |
|-----------------------|---|
| Image Sensor          | 1/2.7" + 1/2.9" Progressive Scan CMOS   |
| Shutter Speed         | Self-adaptive shutter   |
| Lens                  | 4mm @ F1.0, viewing angle: 46° (Vertical), 87° (Horizontal), 103° (Diagonal) (1080p)<br>4mm @ F1.6, viewing angle: 46° (Vertical), 87° (Horizontal), 103° (Diagonal) (4K) |
| PT Angle              | Pan: 340°, Tilt: 70°  |
| Minimum Illumination  | 0.01 Lux @ (F1.0, AGC ON), 0 Lux with IR (*data is obtained from EZVIZ laboratories)  |
| Lens Mount            | M12   |
| Day / Night Switch    | IR-cut filter with auto switch  |
| DNR                   | 3D DNR  |
| WDR                   | Digital WDR   |
| BLC                   | Supports  |
| Night Vision Distance | 30m / 98ft  |

## Video & Audio

|                   |   |
|-------------------|---|
| Max. Resolution   | 3840 × 2160                                       |
| Frame Rate        | Self-adaptive during network transmission         |
| Video Compression | H.265 / H.264                                     |
| H.265 Type        | Main profile                                      |
| Video Bit Rate    | Ultra HD; Quad HD; Full HD;HD. Adaptive bit rate. |
| Audio Bit Rate    | Self-adaptive                                     |

## Network

|                    |  |
|--------------------|--|
| Wi-Fi Standard     | IEEE802.11b, 802.11g, 802.11n                        |
| Frequency Range    | 2.4 GHz ~ 2.4835 GHz                                 |
| Channel Bandwidth  | Supports 20 MHz                                      |
| Security           | 64 / 128 - bit WEP, WPA / WPA2, WPA-PSK / WPA2 - PSK |
| Transmission Rate  | 11b : 11 Mbps, 11g : 54 Mbps, 11n : 150 Mbps         |
| Wi-Fi Pairing      | AP pairing   |
| Protocol           | EZVIZ Cloud Proprietary Protocol                     |
| Interface Protocol | EZVIZ Cloud Proprietary Protocol                     |
| Wired Network      | RJ45 × 1(10 m / 100 m adaptive Ethernet port)        |

## Function

|                       |  |
|-----------------------|--|
| Smart Alarm           | AI-powered human shape detection<br>AI-powered vehicle shape detection |
| Customized Alert Area | Supports   |
| Two-Way Talk          | Supports   |
| Auto Tracking         | Supports   |
| General Function      | Anti-Flicker, Dual-Stream, Heart Beat, Password Protection, Watermark  |



# Specifications

CS-H80x-R100-8G82WKFL

## Storage

|               |  |
|---------------|--|
| Local Storage | Supports microSD card (Up to 512 GB)                     |
| Cloud Storage | Supports EZVIZ CloudPlay storage (Subscription required) |

## General

|                      |  |
|----------------------|--|
| Operating Conditions | 30°C ~ 50°C Humidity 95% or less (non-condensing)                  |
| IP Grade             | IP65   |
| Power Supply         | DC 12V / 1A  |
| Power Consumption    | MAX. 12W   |
| Dimensions           | 170 × 112 × 154 mm (6.69 × 4.41 × 6.06 inch)                       |
| Packaging Dimensions | 205 × 176 × 194 mm (8.07 × 6.93 × 7.64 inch)                       |
| Weight               | Product: 630 g (22.22 oz)<br>Weight with package: 1035 g (36.5 oz) |



## In the box

- H80x Dual 4K Camera
- Drill Template
- Waterproof Kit
- Screw Kit
- Power Adapter
- Regulatory Information × 2
- Quick Start Guide

## Certifications

CE / UL / WEEE / RoHS / REACH

Specifications are subject to change without notice. "🌈", "EZVIZ" and other trademarks and logos are the properties of EZVIZ in various jurisdictions.